

PHILADELPHIA PRESBYTERIAN CHURCH

351 Morrow Road, Forest Park, Georgia 30297

THE CROSSROADS

Dear Friends in Christ,

It is hot, and then it storms. It is hot, and then it storms. With the crazy weather and resurgence of COVID, life seems pretty chaotic these days. Do we mask or not? When do we mask? What will happen when the children start back to school?

We've faced all this before – too often, it seems. On top of that, we're all worried about our 401K balances, gas and grocery prices, unending war in Ukraine, and crazy politics. Again, life seems chaotic. I'm reminded that this year the Presbyterian Women will study "Celebrating Sabbath." This study emphasizes the need to rejoice in the Sabbath, and to experience Sabbath rest. Deep breaths for the soul, in my opinion. So when it gets chaotic and you begin to worry, I remind you that God is in control, and God wants you to stop – absolutely stop – on the Sabbath, and rest. Deep breaths for the soul. A quiet time to remember whose you are, and that you are loved, in spite of the craziness around you.

I remember that this time of year I can go to the Farmer's Market and get fresh produce. The ladies have gone to the peach orchard and brought home delightful fruit. The tomatoes may be slow due to the rain, but they're coming. I delight in summer produce, and I am always reminded of God's gift to us – from the garden of Eden originally down to fresh okra and green beans today.

God cares for us, even when it's stormy. May you breathe in the scent of those fresh peaches and taste a good acidic tomato this month and remember the bounty of God's creation. And on Sundays, come join us for worship and take a moment to pray for your loved ones and the world with thanksgiving for God's blessings.

Jeanne

PASTOR:
Rev. Jeanne Simpson

PHONE:
404-366-1851

PASTOR E-MAIL:
revjeannesimpson@gmail.com

SECRETARY E-MAIL:
secyppc@bellsouth.net

WEBSITE:
ppc-usa.org

A light in the community that brings all people to God through Christ centered worship and ministry and nurtures their faith in order to extend His kingdom.

Inside this issue:

Prayer List	2
Birthdays & Anniversaries	2
Thank Yous	2
Craft Group	2
PW Corner	2
Session Report	2

THIS MONTH'S BIRTHDAYS

19/ Glenda Taylor
22/ Betty Brock
30/ Brooke Lloyd

ANNIVERSARIES

24/ Dot & Emory Pearce
25/ Ruth & Erin Gettys

THIS MONTH'S USHERS

Fred Rohrbach
Rick Pierce
Mary Smith
David Hatch

TO BE REMEMBERED IN PRAYER AND WITH CARDS (new info in bold)

Please notify us concerning new info and updates. Inquiring minds – and prayerful hearts – want to know!

07/24 Van Banke –recovering from back surgery and infection. Now has COVID
07/24 Gerri Dean Bradley (Mary Smith's sister) – pneumonia, scheduled for PET scan
07/24 Philippe Karka—in Piedmont Midtown—colon surgery for bleeding
06/12 Stan Meares (Danny Morris' brother-in-law) - dialysis for kidney issues-in hospital
06/12 Louis Morgan (Angie Tharpe's brother-in-law & Kathy Banke's uncle) – not doing well
06/15 Barbara Sutton (Joyce's niece) spine cancer, chemo treatment with bad side effects

OUR HOMEBOUND: *Please refer to the Church Directory for contact information*

Nell Cates Patty Boone Becky Huie Ann NeSmith

Prayer Request: Call 404-366-1851, Email secyppc@bellsouth.net or call a Session member or Shepherd.

Thank You!

Your generosity is beyond measure this month. Because of that generosity, we were able to donate 97 slightly used books and luggage to the local women's shelter, Secur'us House, with an estimated value of \$894.54.

The Kinship Care Resource Center donations for back to school were also very generous. We were able to deliver to them, a total of 2,327 items on their wish list at a total value of \$1,658.96.

**Connie McWilliams,
Community Missions**

CRAFT GROUP

AUGUST 09 - 11:30am @ Italian Oven, Eagles Landing Pkwy., Stockbridge

AUGUST 23— 11:30am @ Chicken Salad Chick, Eagles Landing Pkwy., Stockbridge

PPC Clerk's Corner

Greetings from the Clerk of Session,

I hope this finds you well and staying cool during this very hot summer. It's hard to believe that it's August and school has started once again. Summer seems to get shorter and shorter.

The Session did meet on Tuesday, July 19, 2022, via Zoom to conduct our monthly business. For the month of June, our financial information was as follows:

- Total Assets - \$71,990.29**
- Monthly Total Revenue – \$12,459.18**
- YTD Revenue – \$78,517.09**
- Monthly Total Expenses – \$16,579.71**
- YTD Expenses – \$74,910.48**

Your continued financial support is greatly appreciated!!!

During the month of August, we are going to practice having a Fire Drill, Tornado Drill, and an Intruder Drill. If you haven't given Cindy an Emergency Contact person and their phone number, please do so as soon as possible.

Don't forget - if you know of someone who is

in need, please let myself or one of the other elders know. If you have an idea as to how we can help one another, please share your idea(s). Together we can accomplish much. Since school is now back in session my time for working on projects will lessen. For the last couple of years, I've just tried to make "progress" on whatever I was working on. If you are working on any projects – like me – I hope you are seeing progress. Don't forget - God gave us projects to do.

Love, Jennifer

PW MESSAGE CORNER:



Aug 7—12:15pm—PWCT meeting
Aug 13 – 10:30am—Circle One
NO Busy Bees or Mary & Martha Circle meetings in August.

Save The Date! Our Annual PW Women's Retreat is set for Saturday, October 29th, beginning at 8:30am with breakfast, includes lunch and ends at 3pm.

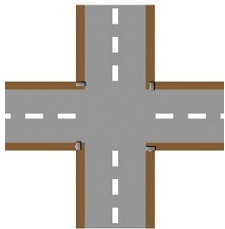
Reverend Jeanne has graciously agreed to once again lead the retreat this year. More details will be available closer to the retreat date. Mark your calendar & plan to join us!

OUR MISSION: is to offer spiritual peace in a chaotic world through the stability of traditional Christ-centered teaching, worship and prayer.

OUR CORE VALUES:

- Radical Hospitality** (Romans 12:9-21)
- Passionate Worship** (John 4:21-24)
- Intentional Faith Development** (I Corinthians 9:19-24)
- Risk-Taking Mission and Service** (Matthew 25:14-30)
- Extravagant Generosity** (II Corinthians 9:6-15)

Find us on the web
ppc-usa.org



*THE CROSSROADS
PHILADELPHIA PRESBYTERIAN CHURCH
351 MORROW ROAD
FOREST PARK GA 30297*